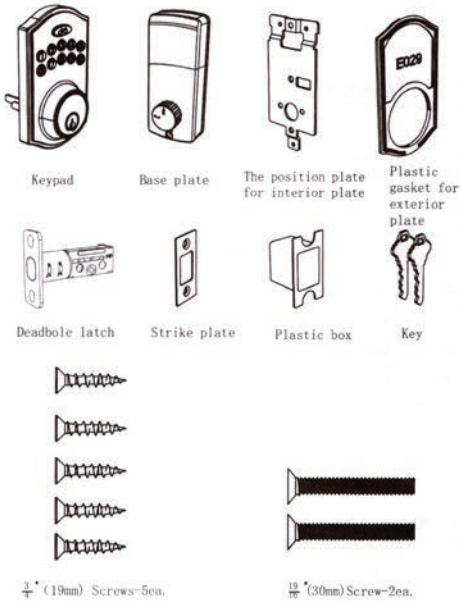


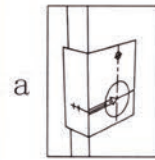
INSTRUCTION FOR ELECTRONIC DOOR LOCK (Applicable Model: E027, E029)

I: Package Contents

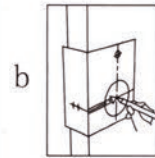


II: Installation and commissioning

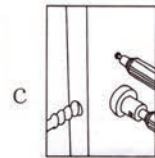
1. Punching in the door according to the dimension requirement.



a. Backset is distance from door edge to centre of hole on door face, adjust Latch fit both backset of $2\frac{3}{8}$ " (70mm) or $2\frac{3}{4}$ " (60mm)

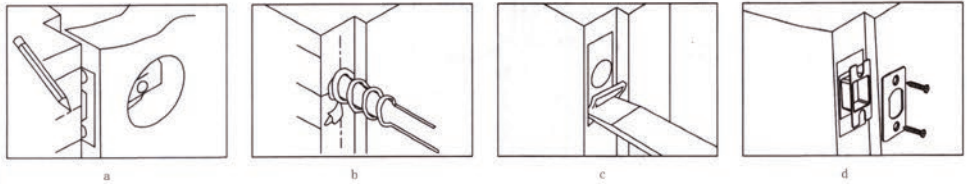


b. Select the height and backset as desired on the door face, use the Template as an indication to mark the centre of the circle on the door face and the centre of the door edge.



c. Use the marks as a guide to drill a hole $\phi 2\frac{1}{8}$ " (54mm) through the door face for the lockset, then a hole of $\phi 1$ " (25.4mm) for Latch.

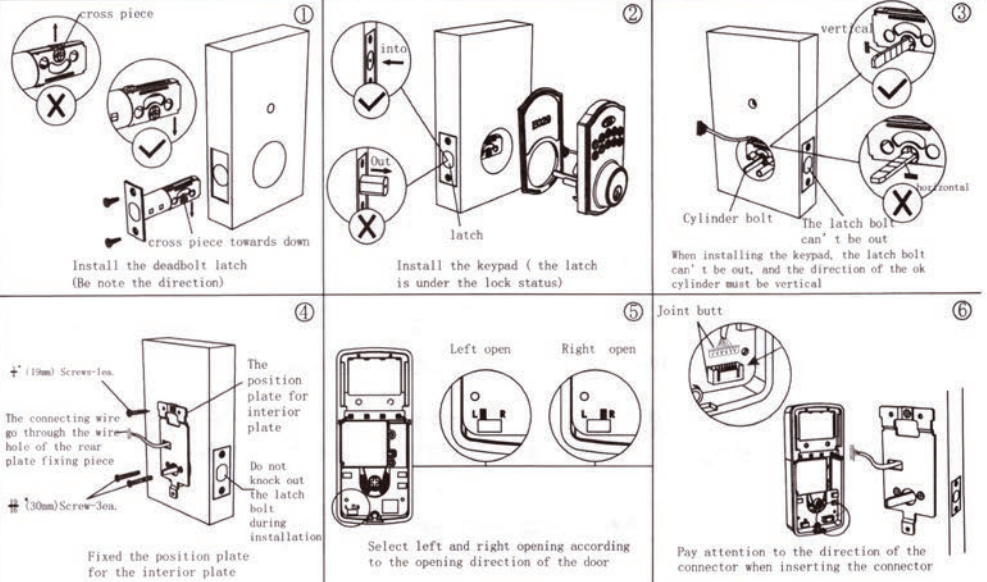
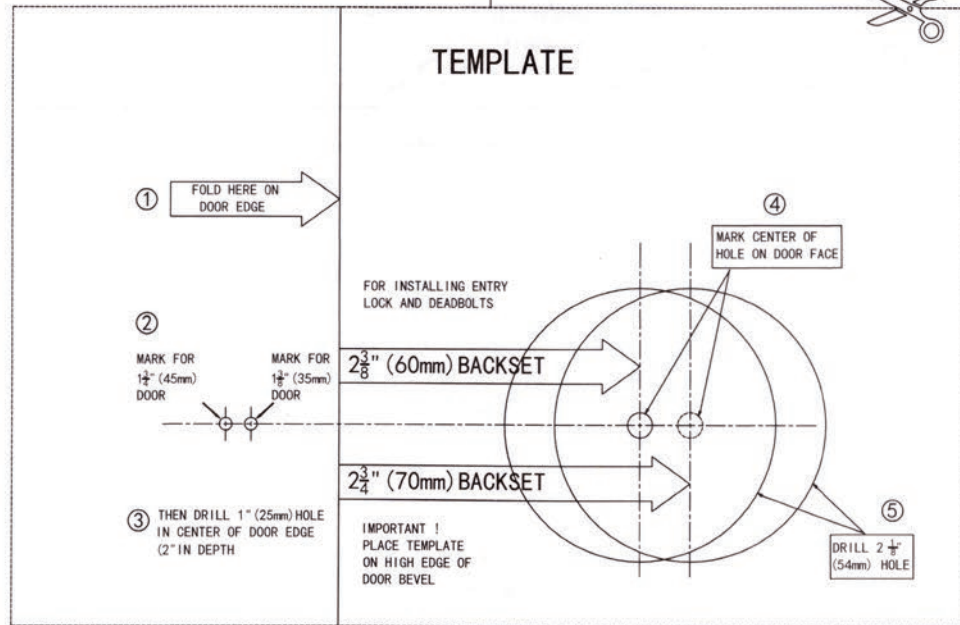
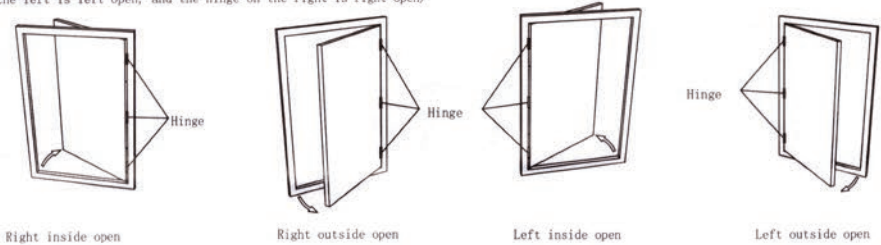
2. Install Strike

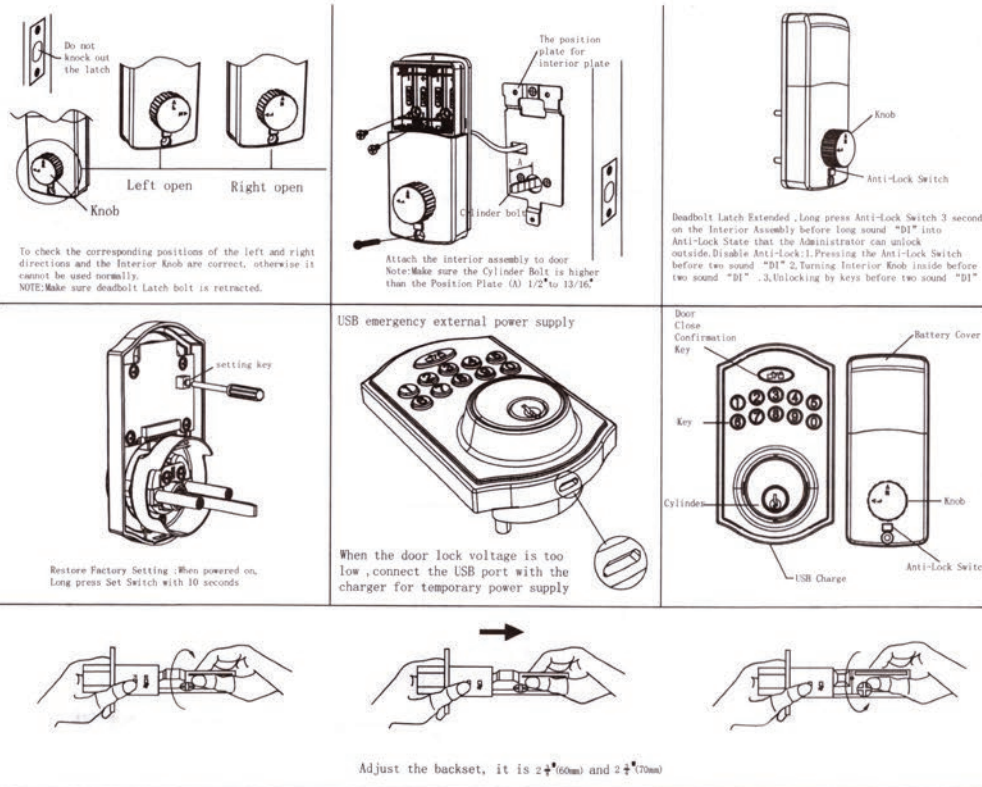


Close door and mark horizontal centre of Latch on to door frame. Mark vertical line where door edge meets frame and measure in half of door thickness to find vertical centre. Extend both lines until they intersect and drill a 1 " (25.4mm) hole to $\frac{1}{2}$ " (15mm) depth. Position Strike plate and mark around edge. Chisel fram to approx $\frac{1}{16}$ " (1.6mm) depth or until Strike sits flush. Using two wood screws fix Strike to the frame.

3. Installation step

The standard is that people stand outside the door facing the door (the hinge on the left is left open, and the hinge on the right is right open)





III: Operation instructions

1. Feature:
- Password length 6-12 bits;
 - Press the lock key **▲** for a long time to lock the door, and the factory status code 123456**▲** can open the door
 - Password anti peeping function: you can add some irrelevant codes before and after the password, and then press **→** confirm (the maximum length is 15 digits). you can enter the password as follows: XXX password XXX**▲**
 - When the password is entered under the low lock voltage , the lock will send out seven alarm prompt(ticking...), please replace the battery in time;
 - Lock the keyboard for 1 minute if inputting wrong password for more than 4 times continuously, the system will not respond to any operation within 1 minute, and unlock automatically after 1 minute.
2. Restore factory settings
- Press the setting key for 5 seconds. Release the setting key after two short "drops", then the blue light flashes quickly, the long "drops" sound. Initialization is successful
 - Removing one of the Battery . Touch the Keypad and install the Battery to the Keypad light. Long press the Anti-Lock Switch for 10 seconds before the light goes out .After two sound "DI" and Blue Light flashes quickly , a long "DI" sound will restore the lock to Factory Setting.
3. Add user (only one administrator can be added. The ID number of the administrator is 000. The same password cannot be registered repeatedly.)
- Add administrator(factory state): **▲▲▲▲** - **123456** - **▲▲** - **new administrator password** - **▲▲** - **new administrator password again** - **▲▲** - **✓**
 - Add user password (Can be added continuously):
▲▲▲▲ - **administrator password** - **▲▲** - **new password user** - **▲▲** - **new password user again** - **▲▲** - **✓**
4. Change operation
- Change administrator password:
▲▲▲▲ - **administrator password** - **▲▲** - **old administrator password** - **▲▲** - **new administrator password** - **▲▲** - **new administrator password again** - **▲▲** - **✓**
 - Change user password **▲▲▲▲** - **administrator password** - **▲▲** - **old password user** - **▲▲** - **new password user** - **▲▲** - **new password user again** - **▲▲** - **✓**
5. Delete operation
- Delete a single user password (the ID number is sorted according to the entry order, the ID number of the first user is 001, the ID number of the second user is 002, and so on): **▲▲▲▲** - **administrator password** - **▲▲** - **ID number of the user** - **▲▲** - **✓**
 - Delete all users (except administrator): **▲▲▲▲** - **administrator password** - **▲▲** - **Enter 00000** - **▲▲** - **✓**

6. Normally open mode
▲▲▲▲ - **administrator password** - **▲▲** - **✓** normally open mode set successfully
Release the normally open ; it is the same way that you set normally open mode or removing the battery and touch the screen for several times and then install the battery, or reset the system, this two ways also can release the normally open . under the normally open , the door can be opened without password , just pressing hand directly, note: there will be potential safety hazard after using this function , it is necessary to fully understand before using it.
7. quiet mode
▲▲▲▲ - **administrator password** - **▲▲** - **✓** quiet mode set successfully.
Release the quiet mode ; it is the same way that you set the quiet mode. The buzzer will not make any sound during operation after mute
8. Automatic Lock Function (Time value range: 5 seconds to 30 seconds)
▲▲▲▲ - **administrator password** - **▲▲** - **Unlock to Lock Time value range** - **▲▲** - **✓** Disable Automatic Lock :Setting time value range to 0 second. (The function is off by default) Automatic Lock Function: Unlock using Password or APP are available . Turning Interior Knob inside or keys outside are unavailable.
9. Vacation Mode (only Administrator Code can unlock)
▲▲▲▲ - **administrator password** - **▲▲** - **✓** under the Vacation Mode only Administrator Code can unlock , other Password will prompt error .
Disable : After removing one of the battery and touching the keypad or Resetting the system.

IV: Note !

- Note: Make sure the latch retracts and extends smoothly to avoid damage to the Motor, check if the Latch and Strike Plate position is right when sound "DI" alarm.
- Although the door lock is treated with simple waterproof treatment, it cannot be installed outdoors that can get wet, so as to avoid damage caused by water entering into the line
- The door lock does not have fire protection function and is not suitable to be installed on the fire door
- Do not use inferior batteries to avoid battery leakage damaging the power supply system
- Please pay attention to the positive and negative poles of the battery when installing the battery
- Do not use sharp hard objects to scratch the surface of the touch key screen
- Do not wipe the lock surface with corrosive liquid to avoid damaging the electroplated layer
- If the administrator password is forgotten, the lock can be reset to the factory status
- If the voltage is too low , the moving speed of the latch will be slow and the latch cannot be retracted completely , please replace the battery in time.

V: Common problem

- No electricity
 - Check whether the connectors of the connecting wires of the front and rear plates are connected properly
 - Is the battery installed? Is the battery installed reversely
- The lock can't be opened
 - Whether the password is correct, and whether the password has been deleted
 - Touch the keypad to check the light and whether the lock has been locked.
 - If setting the Vacation Mode or Unlocking mode.
- Fast power consumption

Check whether the battery is of poor quality. Normally, the battery can be used about one year

VI: Specification parameter

Power supply	4.5V-6.5V (4 AA battery)	Password quantity	100	Doorthickness	33mm-52mm		
Quiescent current	Less than 40 uA	working temperature	-20° C-70°C	Unlocking method	Password, key		
Dynamic current	Less than 250mA	relative humidity	20%-93%	APP	without		