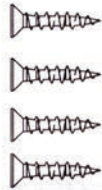
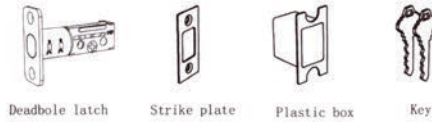
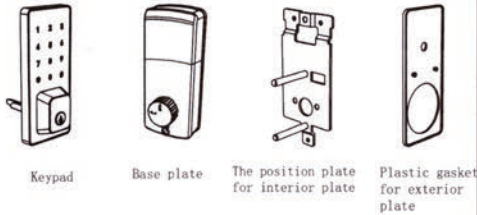


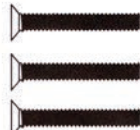
INSTRUCTION FOR ELECTRONIC DOOR LOCK (Applicable Model: E020, E021)

This manual is applicable to multiple models. The physical appearance may not be in accordance with the manual, but the operation is the same. It will not affect use.

I: Package Contents



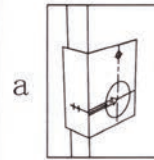
$\frac{3}{16}$ " (19mm) Screws-4ea.



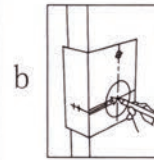
$\frac{1}{8}$ " (30mm) Screw-3ea.

II: Installation and commissioning

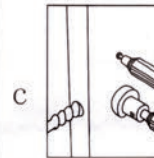
1. Punching in the door according to the dimension requirement.



a, Backset is distance from door edge to centre of hole on door face, adjust Latch fit both backset of $2\frac{3}{4}$ " (70mm) or $2\frac{1}{2}$ " (60mm)

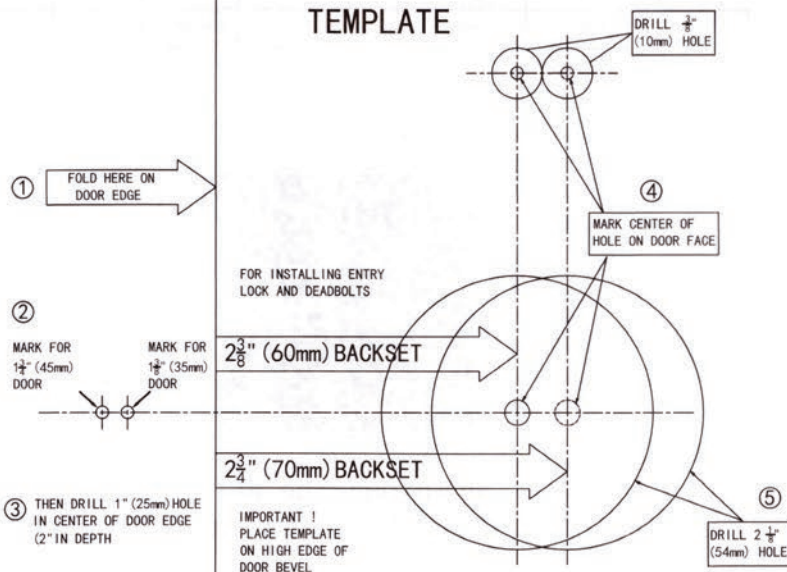


b, Select the height and backset as desired on the door face, use the Template as an indication to mark the centre of the circle on the door face and the centre of the door edge.

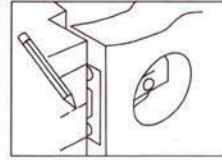


c, Use the marks as a guide to drill a hole $2\frac{1}{8}$ " (54mm) through the door face for the lockset, then a hole of $\phi 1$ " (25.4mm) for Latch.

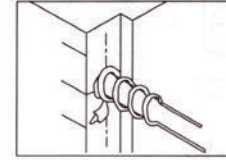
TEMPLATE



2. Install Strike



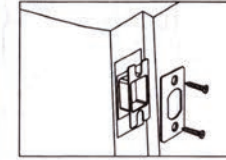
a



b



c

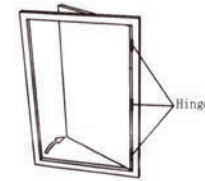


d

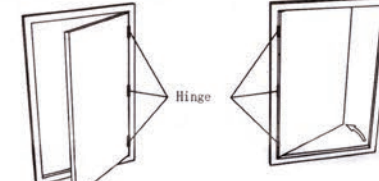
Close door and mark horizontal centre of Latch on to door frame. Mark vertical line where door edge meets frame and measure in half of door thickness to find vertical centre. Extend both lines until they intersect and drill a 1" (25.4mm) hole to $\frac{1}{2}$ " (15mm) depth. Position Strike plate and mark around edge. Chisel fram to approx $\frac{1}{16}$ " (1.6mm) depth or until Strike sits flush. Using two wood screws fix Strike to the frame.

3. Installation step

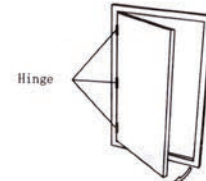
The standard is that people stand outside the door facing the door (the hinge on the left is left open, and the hinge on the right is right open)



Right inside open



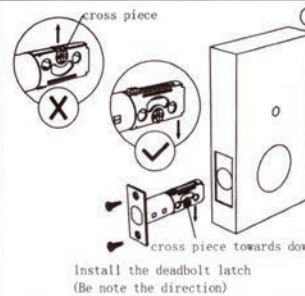
Right outside open



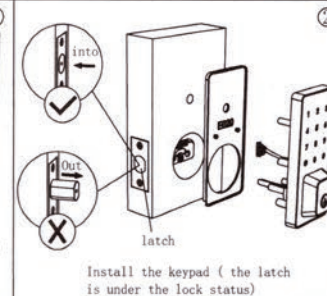
Left inside open



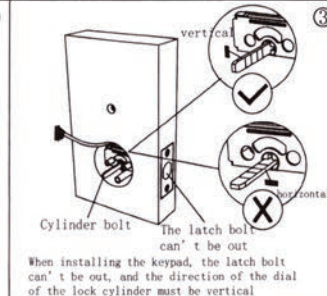
Left outside open



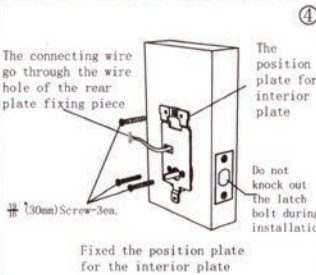
Install the deadbolt latch (Be note the direction)



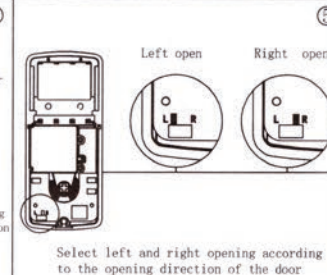
Install the keypad (the latch is under the lock status)



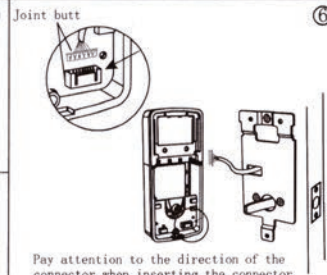
When installing the keypad, the latch bolt can't be out, and the direction of the dial of the lock cylinder must be vertical



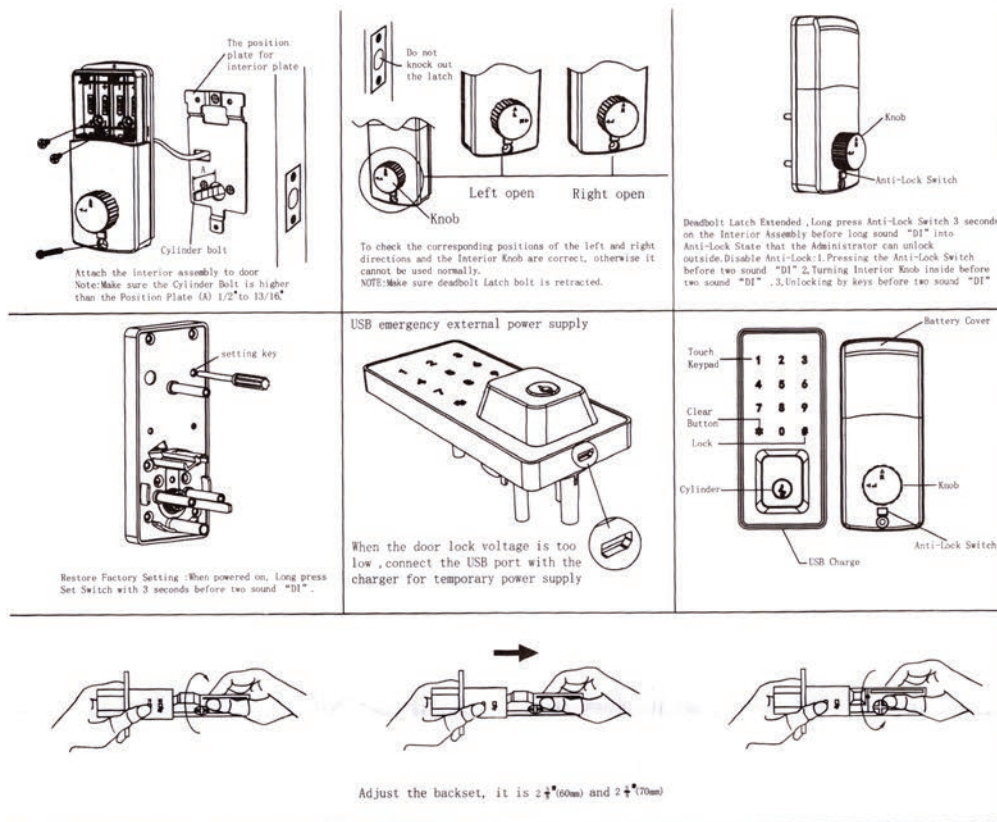
Fixed the position plate for the interior plate



Select left and right opening according to the opening direction of the door



Pay attention to the direction of the connector when inserting the connector



6. Change the user password (users not added through the app need to use the upload function in the app to display in the app)
- a. **[F10] → Old user password → [E] → New user password → [E] → New user password again → [E] → [✓]**
- b. When the lock is registered in the app, click the password management to open the password to be modified and directly modify it
7. Delete (the door lock operation cannot delete a single user alone, and the app can delete a single user)
- Delete all passwords (except administrator): **[F7] → Administrator password → [E] → [✓]**
8. Add App for Digital Lock
- a. Factory State :When the screen light is off ,User touch the Keypad to wake the Lock and add Bluetooth Administrator before Long Sound "DI".
- b. Adding New Administrator: Although the lock has set an Administrator password or added an APP ,allow other App user to add this lock and become the new administrator. Let the lock enter the mode where you can add the phone Administrator.
- [F5] → Administrator password → [E] → [✓]**

V: Note !

- Note: Make sure the latch retracts and extends smoothly to avoid damage to the Motor. To check the Latch and Strike Plate position is right when sound "DI" alarm.
- Automatic Lock Function: Unlock using Password or APP are available .Turning Interior Knob inside or Keys outside are unavailable.
- Although the door lock is treated with simple waterproof treatment, it cannot be installed outdoors that can get wet, so as to avoid damage caused by water entering into the line
- The door lock does not have fire protection function and is not suitable to be installed on the fire door
- Do not use inferior batteries to avoid battery leakage damaging the power supply system
- Please pay attention to the positive and negative poles of the battery when installing the battery
- Do not use sharp hard objects to scratch the surface of the touch key screen
- Do not wipe the lock surface with corrosive liquid to avoid damaging the electroplated layer
- If the administrator password is forgotten, the lock can be reset to the factory status
- If the voltage is too low, the moving speed of the latch will be slow and the latch cannot be retracted completely, please replace the battery in time.

V: Common problem

- No electricity
 - Check whether the connectors of the connecting wires of the front and rear plates are connected properly
 - Is the battery installed? Is the battery installed reversely
- The lock can't be opened
 - Whether the password is correct, and whether the password has been deleted
 - Touch the keypad to check the light and whether the lock has been locked.
- Fast power consumption

Check whether the battery is of poor quality. Normally, the battery can be used about one year

VI: Specification parameter

Power supply	4.5V-6.5V (4 AA battery)	fingerprint quantity		working temperature	-20° C-70°C	Unlocking method	Password, APP, key
Quiescent current	Less than 40 uA	Password quantity	150	relative humidity	20%-93%	APP	With
Dynamic current	Less than 250mA	Card quantity		Doorthickness	33mm-52mm		

III: Operation instructions

1. Feature:

- Password length 6-12 bits;
- Press the lock key (#) for a long time to lock the door, and the factory status code 123456# can open the door
- To prevent peeping, you can add some irrelevant codes before and after the password, and then press the confirm key (the maximum length is 15 bits), you can enter the password as follows: XXX password XXX #
- Low voltage prompt function: touch and light the panel when the battery voltage is lower than 4.8V, and the backlight on the screen flashes quickly 1 second. Before the IC card / password is unlocked, the backlight on the screen will flash quickly for 1 second, and then unlock again
- When using APP to operate the door lock, most of the function operations need to be operated beside the door lock .
- The registered user for password on the door lock need to use the upload function in the app to see and edit then in the app
- Password input error protection function: the system will lock the password keyboard when the unlock password is input wrong 5 times in a row, and automatically unlock it after 5 minutes. During locking, the correct app can unlock the keyboard.

2. Restore factory settings

- Press and hold the reset button for a long time, and two "drops" will be heard. The lock will be restored to the factory settings. After the system is cleared, all the passwords added before and the phone administrator will be invalid
- When app is added to the lock, you can delete the administrator of this lock in APP (click Settings - click delete). Note: after deleting the administrator on the app, the lock will be restored to the factory settings, and all previously added passwords and mobile administrator will be invalid;
- Removing one of the Battery . Touch the Keypad and install the Battery to the Keypad light. Long press the Anti-Lock Switch for 10 seconds before the light goes out. The system is successfully cleared with two sound "DI".

3. Add administrator password

- When the lock is in the factory state and the app is not registered:

[F10] → 123456# → [E] → New administrator password → [E] → New administrator password again → [E] → [✓]
- After the lock is restored to the factory settings, the system will automatically generate an administrator password after the mobile app adds the lock, which can be revised in the app

4. Add user password (Can be added continuously), users who are not added through the app need to use the upload function in the app to display

- [F5] → Administrator password → [E] → New user password → [E] → New user password again → [E] → [✓]**
- If the lock is registered in the app, just Add password in the app

5. Change administrator password

- [F10] → Old administrator password → [E] → New administrator password → [E] → New administrator password again → [E] → [✓]**
- On the app, select this lock name -> Settings -> administrator unlock password -> enter the new administrator password.



download the APP