

Temporarily Disable Auto - Lock

Disable

While in Auto-Lock mode; unlock door using **UC** within 10 seconds you must turn the locking knob by hand to the locked position, wait more than 2 seconds then turn the locking knob back to the unlock position. The Auto-Lock mode is now disabled.

Restore

To restore the Auto-Lock function, you can turn the locking knob by hand to the locked position, wait more than 2 seconds or press the **Lock** button on the keypad.

Sound On and Off

You can "mute" or turn the "sound on" on your lock by entering the following. (Factory setting is sound on).

PC → **Lock** → **6** → **Lock** → **1 or 2** → **Lock**
 1 = Sound On
 2 = Sound Off

Sound On (1) - Hear 1 beep and Light Indicator illuminates green.
 Sound Off (2) - Hear 1 beep and Light Indicator illuminates green.

Vacation Mode

With Vacation Mode enabled, the system enters into low-power consumption mode. During this mode, all buttons and functions will be invalid until they are re-enabled(see steps below).

1. If the lock was in the UNLOCK state, use the following setting sequence:

Enable : **PC** → **Lock** → **10** → **Lock** (Hear 1 beep) → **1** → **Lock** Hear 2 beeps and Light Indicator illuminates RED then door locks.

2. If the lock was in the LOCK state, use the following setting sequence:

Enable : **PC** → **Lock** → **10** → **Lock** Hear 1 beep and Light Indicator illuminates green.

Disable : To disable Vacation Mode, press and hold **Lock** for more than 3 seconds until keypads illuminate, then input **PC** + **Lock** to unlock the door. Vacation Mode is now disabled.

NOTE: If you only press the **Lock** for more than 3 seconds but do not input **PC** + **Lock**, the system will remain in Vacation Mode.

Secure Lock - Out Period

After 4 incorrect code attempts: Keypad shuts down for 60 seconds.

Restore Factory Settings

To reset the lock to the original factory settings including the Programming Code **PC** and all User Codes **UC** remove one battery for 10 seconds. Reinsert the battery and wait for a long and short beep. Press **Lock** 3 times within 3 seconds. The lock will beep and Light Indicator will turn green.

Low Battery Warning

Beeps and LED flashes **red for 5 seconds. Replace with good quality alkaline batteries.**

Note : Removing batteries does not erase active Programming or User Codes.

Audio and Visual Message Guide



Unlock / Valid programming:	1 long beep and LED illuminates green
Lock:	2 short beeps and LED illuminates red
Invalid Programming:	2 short beeps and LED flashes red twice
Low Voltage:	Beeps for 5 seconds (7/9 times depends on operation is unlock/lock)
Super Low Voltage:	4 short beeps and LED flashes red four times
4 Incorrect code entry attempts:	2 short beeps and LED illuminates red each attempt
Power on:	1 long beep and 1 short beep and LED illuminates green
Chip Reset:	1 long beep and 1 short beep and LED illuminates green (may occur several times or once in a while)
Lock Error:	3 long beeps LED flashes red three times
Repeat operation after Lock Error:	2 short beeps three times LED flashes red six times

Attention:

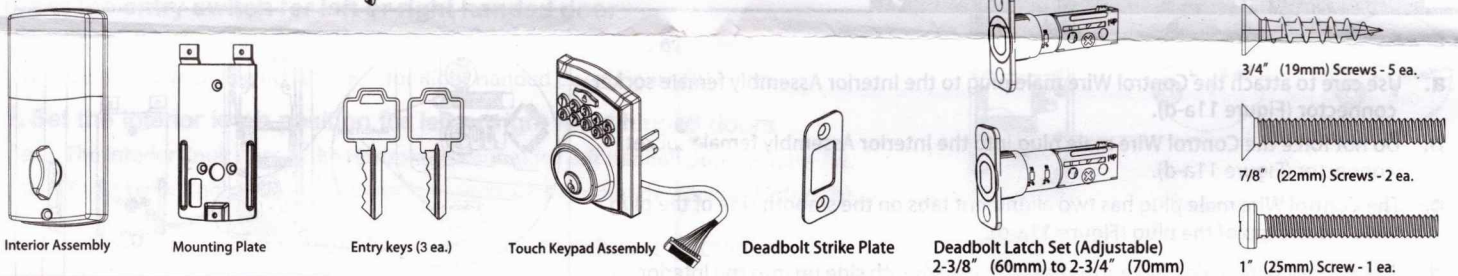
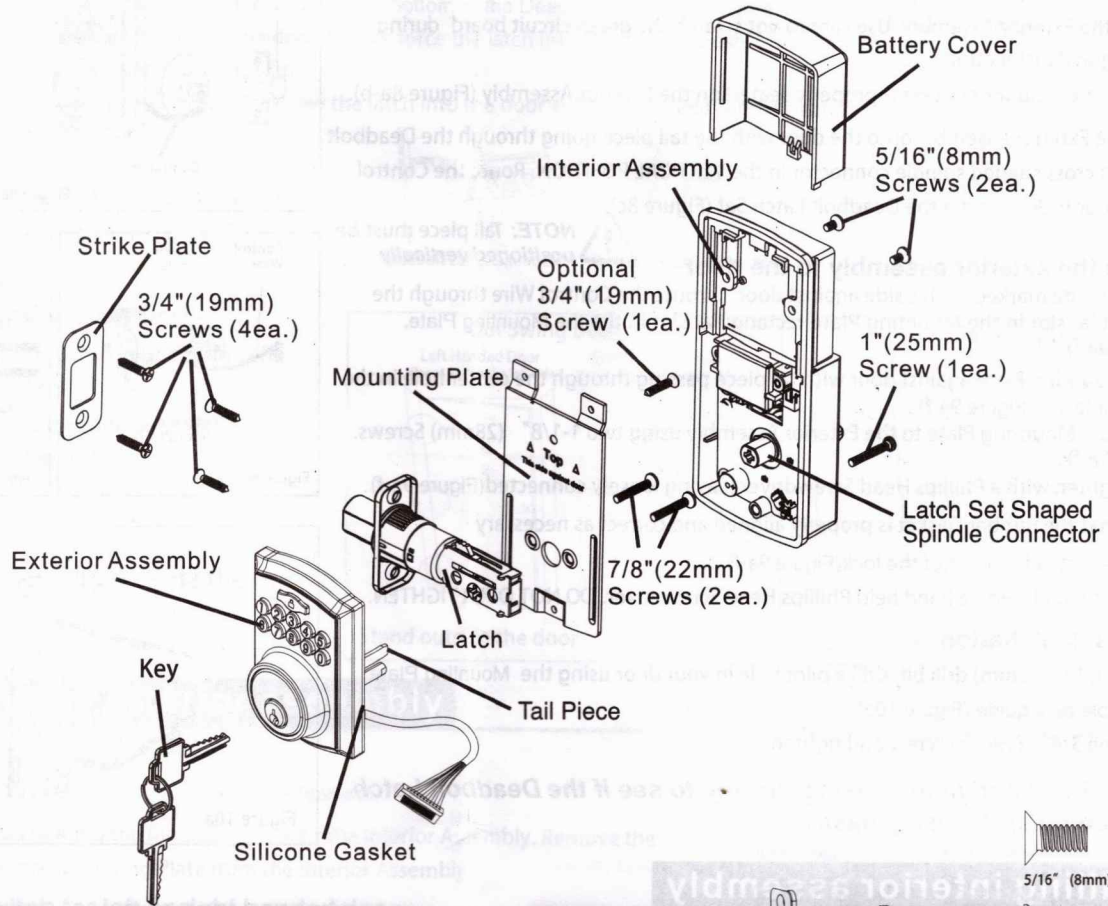
When battery is under low voltage, the lock will give the (Low Battery Warning: Beeps and LED flashes red for 5 seconds). During this time your lock can still work. However once the voltage is lower than 4.3V (called Super - Low Voltage), the operation of the locking and unlocking will not work and user must replace batteries immediately.

Installation Trouble Shooting

Issue	Solution
Latch Working Backwards-Lock unlocks when lock button is pushed or locks when unlock button or code is pushed.	Direction switch is set to incorrect setting. Remove the Interior Assembly and Remove the Interior Assembly and move the switch to the opposite direction. • Check that your switch is set in the correct position Left or Right Handed door. If Correct • Rotate Interior Knob and reinstall Interior Assembly. Retest again while holding Assembly in place.
Interior Knob will not turn.	Knob or vertical tailpiece is installed in incorrect position. Remove Interior Assembly and reposition the Interior Knob. With the Deadbolt Latch retracted is vertical.
Lock will not function electronically.	• Check that all batteries are fresh high quality Alkaline Batteries. • Check for proper polarity (+ -) of all batteries. • Check that the Control Wire is attached to the Interior Assembly.
Lock gives error signal when opening or locking and Dead bolt Latch will not extend or - retract completely when door is closed.	Unlock door using Key or Interior Knob. While door is open, check that the Deadbolt Latch operates smoothly. Check for proper alignment of the strike plate, adjust as needed to assure there is no binding against the Deadbolt Latch.
Deadbolt Latch is sticking.	Installation screws of the lock may be too tight and have to be loosened. • Remove Interior Assembly. • Slightly loosen the Mounting Plate screws. • Lock and unlock using the Key. • Reattach Control Wire and Interior Assembly.

Installation Instructions

DIGITAL LOCK
SKU: 140 115
MODEL: DEL01KP



Tools Required

Tools Required for Installation *on Doors That Require Drilling:*

- Drill
- Pencil
- 1" (25mm) Drill Bit
- Chisel
- Phillips Head Screwdriver
- Tape Measure
- 2-1/8" (54mm) Drill Hole Saw
- 1/16" (2mm) Drill Bit
- Hammer

1 Drilling hole in Door

Note: • Please read and understand this entire manual before attempting to assemble, operate or install the product.



- Do not use electric screwdriver, only hand tighten screws with phillips head screwdriver. **DO NOT OVER TIGHTEN SCREWS.**
- If your door has pre - drilled holes skip to step 3 c .

1. Mark door for Drilling

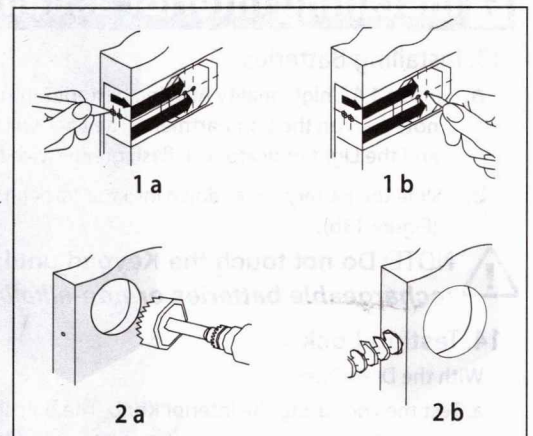
- a. Start 36" from floor. Fold and apply template to high edge of door.
- b. Mark center hole on door face through guide on template for 2-3/8" (60 mm) or 2-3/4" (70 mm) backset.

2. Drilling Holes

- a. Drill 2-1/8" hole through door face as marked for lock set.
- b. Drill 1" hole in center of door edge for latch.

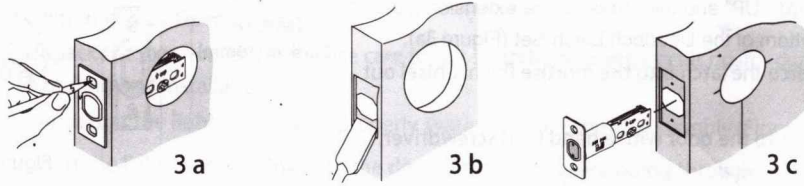
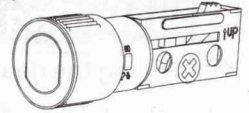
3. Marking the jamb hole Location

- a. Insert latch in hole keeping it parallel to face of door. Mark outline and remove latch.
- b. Chisel 1/8" deep or until latch face is flush with door edge.
- c. Insert latch and tighten screws.





Note: For drive in latch drill hole size indicated on template and press latch until it is flush with door edge.

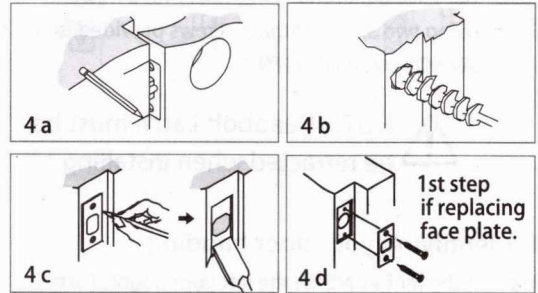


1st step if hole is predrilled.

4. Install deadbolt strike plate into door Frame

Note: If hole is pre-drilled skip to step 4d

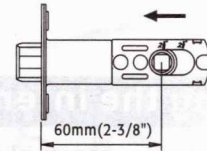
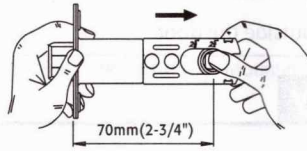
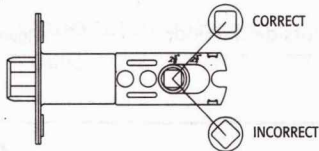
- Mark template from edge of jamb and locate strike opening.
- Drill 1" hole 1 3/16" deep in door jamb on center line of screws.
- Outline outside edges of strike. Chisel 1/6" deep for strike or until flush.
- Install strike and tighten screws. (3/4" (19mm) Screws)



2 Adjusting deadbolt latch set

TUBULAR LOCK UNIVERSAL BACKSET LATCHBOLT

THIS STEP IS FOR AN ADJUSTABLE LATCH ONLY. (NOT APPLICABLE TO 7/8" (22mm) FIXED 2-3/8" (60mm) BACKSET DRIVE IN LATCH FOR MOBILE HOME PRIVACY AND PASSAGE LOCKSET.) (THIS BACKSET ADJUSTMENT INSTRUCTION APPLIES ONLY WHEN ADJUSTMENT IS NECESSARY)



FACTORY PRESET 2-3/8" (60mm) BACKSET.

Latchbolt is preset at factory for 2-3/8" (60mm).
CAUTION: Be sure the Latch Cam Driver is upright before making any backset adjustment.

CONVERTING 2-3/8" to 2-3/4" (60mm to 70mm) BACKSET.

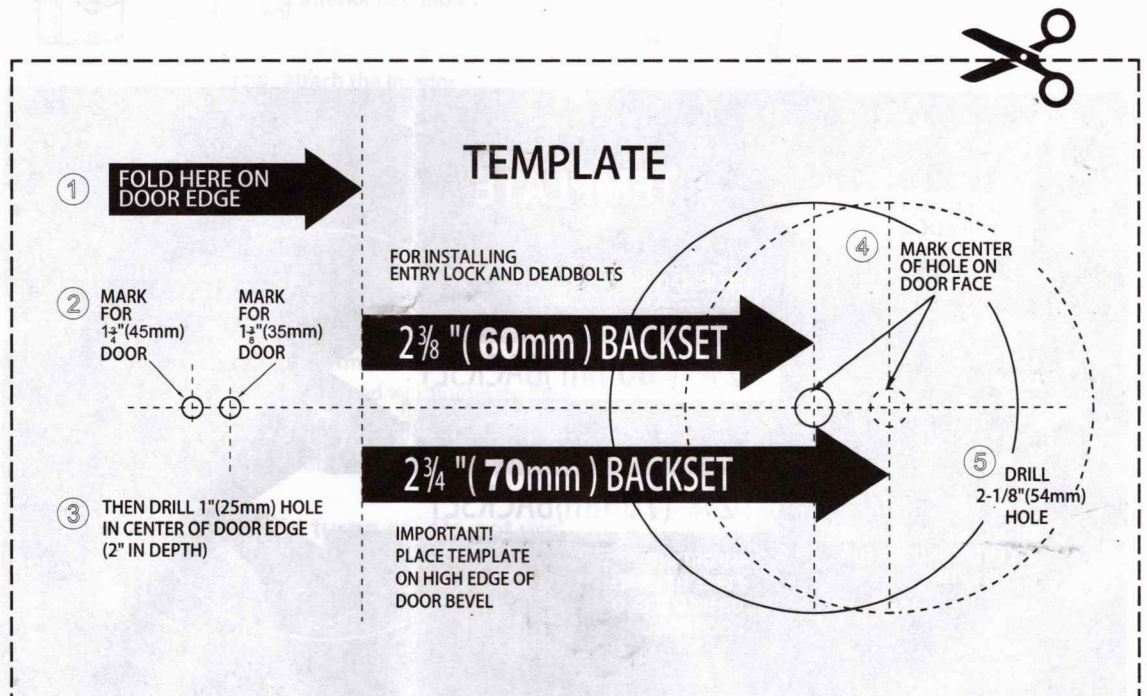
Pull the rear part of the latchbolt all the way back until the indicator is completely shown 2-3/4" (70mm).

CONVERTING 2-3/4" to 2-3/8" (70mm to 60mm) BACKSET.

Push the rear part of the latch towards latch front until the indicator is completely shown 2 3/8" (60mm).

The following care instructions should be observed to insure a long lasting finish:

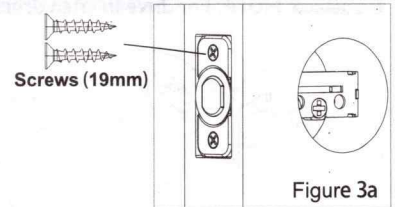
- Remove locks, or do not install locks, prior to painting door.
- Clean only with mild soap and a soft cloth; avoid abrasives (such as steelwool or cleansers) degreasers or lacquer thinners, and sharp objects.



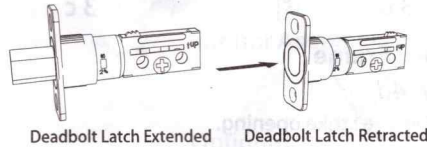
3 Installing deadbolt latch set

3. Installing the deadbolt latch set (need phillips head screwdriver)

- Insert Deadbolt Latch Set into door edge hole with the word "UP" and the arrow on the extension plate facing UP. Cross shaped spindle connector will be at the bottom of the Deadbolt Latch Set (Figure 3a).
- Make sure the face plate sits flush with the door. Do not force the latch into the mortise flush. Chisel out excess material if necessary for a flush fit.
- Using two 3/4" (19mm). screws provided, screw the latch into the door with a hand held screwdriver. DO NOT OVER TIGHTEN.



NOTE: Deadbolt Latch must be retracted when installing.

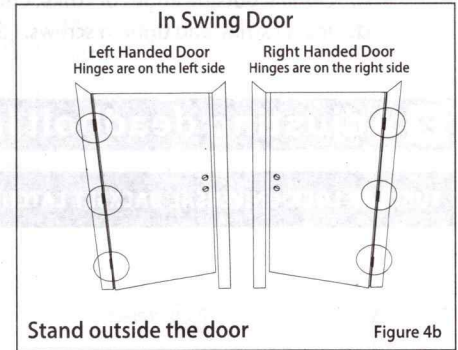
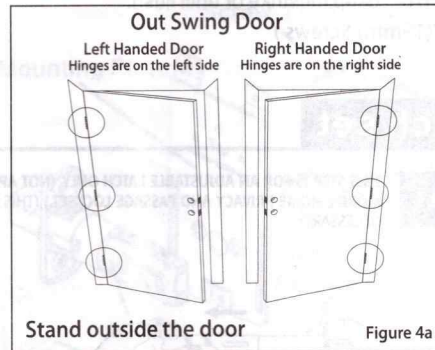


4. Identifying your door handing

- If the hinges are on the left your door is Left Handed (Figure 4a and 4b).
- If the hinges are on the right your door is Right Handed (Figure 4a and 4b).



NOTE: You are standing outside the door



4 Preparing the interior assembly

5. Unpack the interior assembly

- Remove the battery cover by sliding the cover upward.
- Locate the screws holding the Mounting Plate to the Interior Assembly. Remove the screws to release the Mounting Plate from the Interior Assembly.

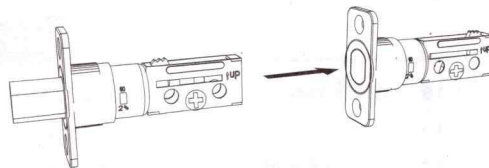
6. Set the entry switch for left or right handed door

- Gently move the switch to "L" for Left Handed Door (Figure 6a).
- Gently move the Switch to "R" for Right Handed Door (Figure 6b).

7. Set the interior knob position for left or right hand hinged doors

- The Interior Knob goes in the Horizontal position for Left Handed Doors (Figure 7a).
- The Interior Knob goes in the Vertical position for Right Handed Doors (Figure 7b).

NOTE: Make sure deadbolt Latch is retracted



Entry Switch
(Left or Right)

Left Hand

Right Hand

Figure 6a

Figure 6b

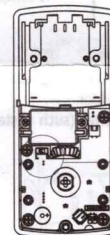
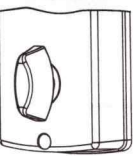
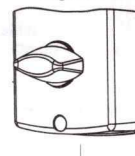
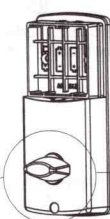


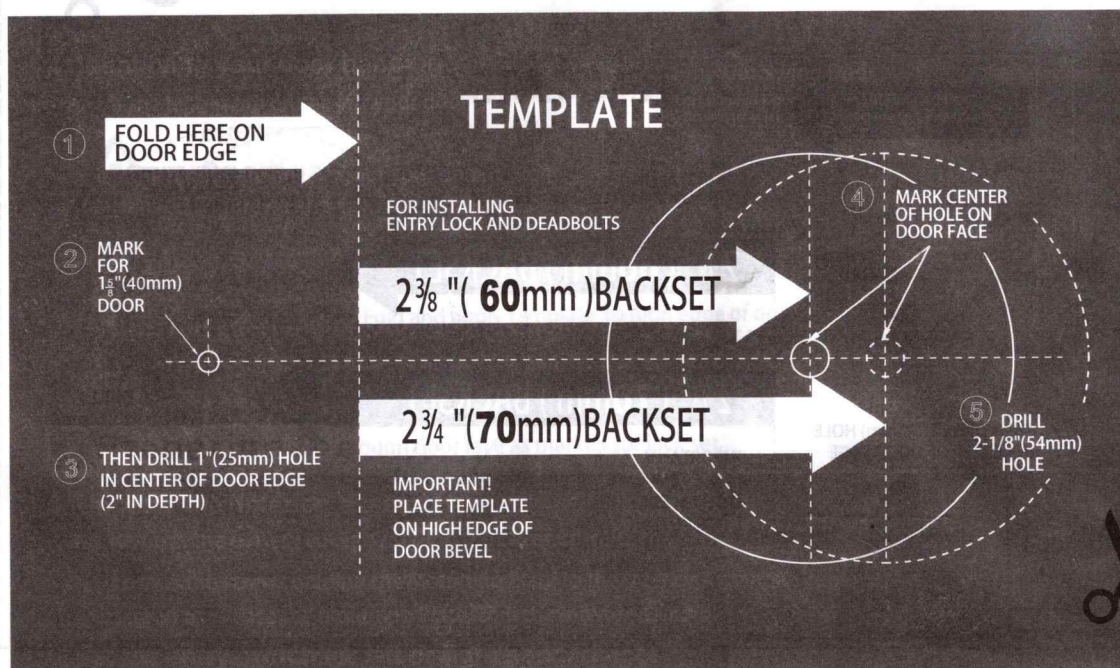
Figure 7a

Figure 7b



Left Handed Door
(Horizontal)

Right Handed Door
(Vertical)



5 Installing exterior assembly

8. Installing the exterior assembly

Work with the Door Open for easy access.

- Unpack the Exterior Assembly. Use care to not scratch the green circuit board during handling and installation.
- Check that the Rubber Gasket is properly seated on the Exterior Assembly (Figure 8a-b).
- Insert the Exterior Assembly onto the door with the tail piece going through the Deadbolt Latch Set cross shaped spindle connector in the VERTICAL POSITION. Route the Control Wire through door under the Deadbolt Latch Set (Figure 8c).

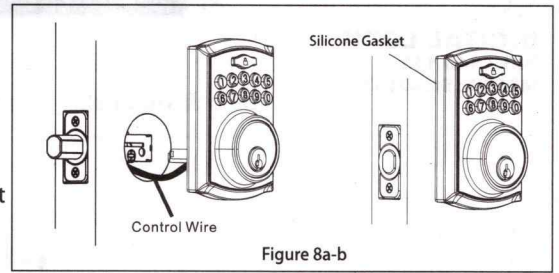


Figure 8a-b

9. Securing the exterior assembly to the door

NOTE: Tail piece must be positioned vertically

- From the side marked "This side against door", route the Control Wire through the rectangular slot in the Mounting Plate rectangular slot in the the Mounting Plate. (Figure 9a-f).
- Place Mounting Plate against door with tailpiece passing through the center hole in the three hole set (Figure 9a-f).
- Secure the Mounting Plate to the Exterior Assembly using two 1-1/8" (28mm) Screws. (Figure 9a-f).
- Hand tighten with a Phillips Head Screwdriver leaving loosely connected(Figure 9a-f).
- Check that the Rubber Gasket is properly aligned and correct as necessary
- Check vertical alignment of the lock(Figure 9a-f).
- Tighten securely with a hand held Phillips Head Screwdriver. DO NOT OVER TIGHTEN.

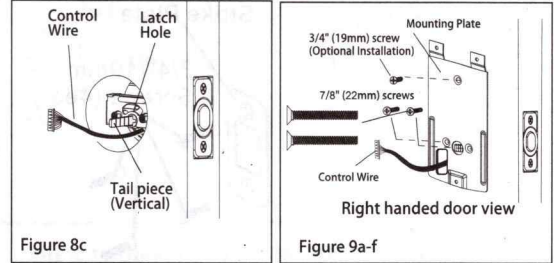


Figure 8c

Figure 9a-f

10. Optional Installation

- Using a 1/16" (2mm) drill bit, drill a pilot hole in your door using the Mounting Plate upper hole as a guide (Figure 10a).
- Insert one 3/4" (19mm) screw and tighten.

NOTE: Lock and unlock using the key to see if the Deadbolt Latch is opening and closing easily.

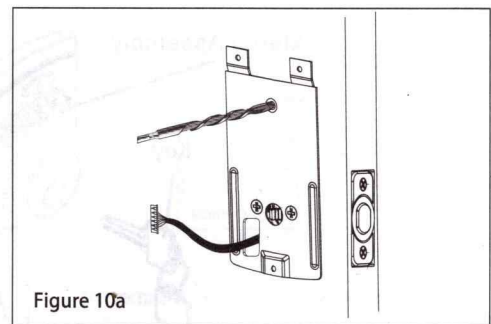


Figure 10a

6 Installing interior assembly

11. Attach the control wire to the interior assembly

- Use care to attach the Control Wire male plug to the Interior Assembly female socket connector (Figure 11a-d).
- Do not force the Control Wire male plug into the Interior Assembly female socket connector (Figure 11a-d).
- The Control Wire male plug has two alignment tabs on the smooth side of the plug which is the top of the plug (Figure 11a-d).
- The Control Wire male plug is inserted with the smooth side up into the Interior Assembly female socket connector (Figure 11a-d).

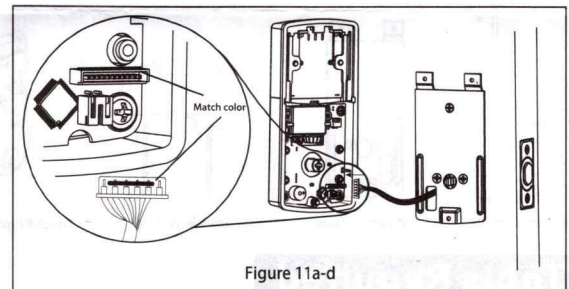


Figure 11a-d

12. Attach the interior assembly to door

- Position the Interior Assembly over the tailpiece and push the Interior Assembly against the door (Figure 12a-b).
- Using two 5/16" (8mm) screws and one 1" (25mm) screw, attach the Interior Assembly to the Mounting Plate. DO NOT OVER TIGHTEN SCREWS (Figure 12a-b).

NOTE: Lock and unlock using Interior Knob to see if the latch is opening and closing easily.

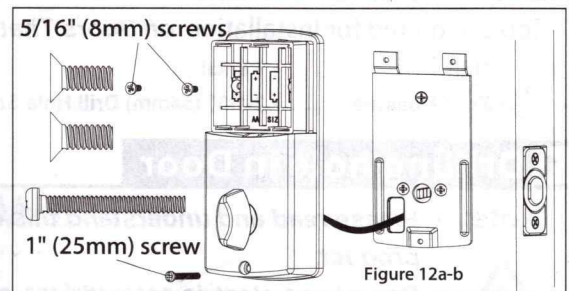


Figure 12a-b

7 Installing interior assembly (CONT.)



13. Installing Batteries

- Insert 4 AA high quality Alkaline batteries into the Battery Compartment in the direction noted +/- on the Compartment. The Lock will beep 2 times, the keypad will illuminate blue, and the Light Indicator will flash green twice to signify that it has received power (Figure 13a).
- Slide the Battery Cover down into the track on the Interior Assembly to cover the batteries (Figure 13b).

NOTE: Do not touch the Keypad until the blue light turns off. Do not use rechargeable batteries or non-alkaline batteries.

14. Testing Lock

With the Door Open

- Test the Lock using the Interior Knob. The bolt should move smoothly.
- Test the lock using the Keypad. To lock press  and then press "1234" 

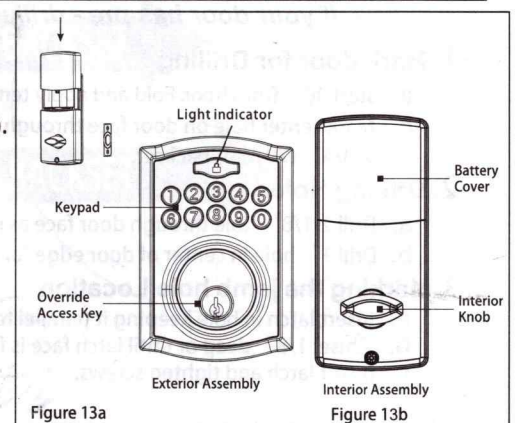


Figure 13a

Figure 13b